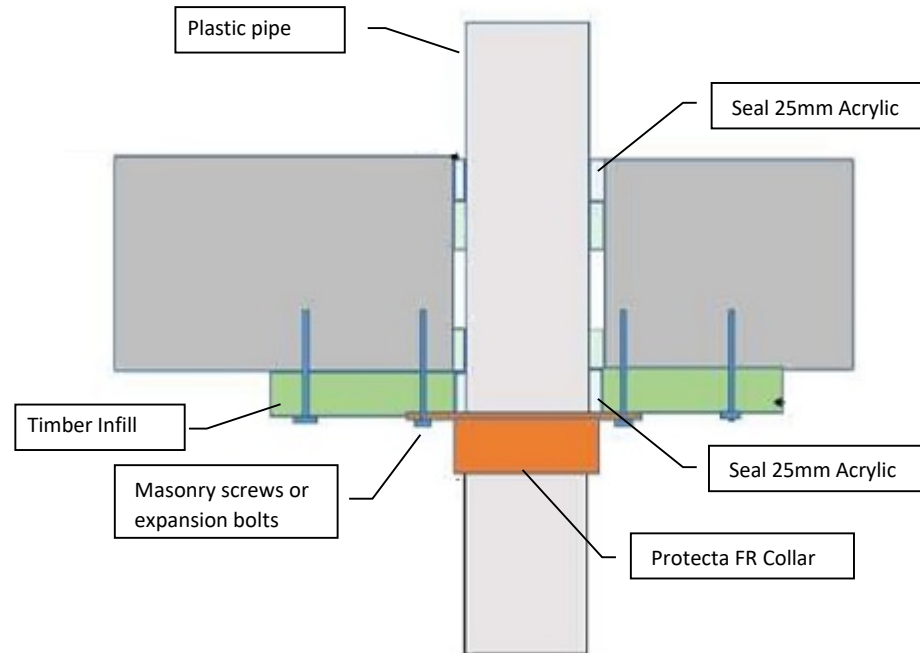


## Protecta FR Collar - Plastic Pipes in Concrete Floors with Timber Infill

### Installation Instructions

1. A single pipe collar is installed on the underside of the floor.
2. Before fitting the pipe collar ensure that any gaps between the pipe and the separating element are sealed. Gaps between the pipe and the construction to be sealed with 50mm FR Acrylic top and bottom, or 25mm deep FR Acrylic on 25mm deep backing of stonewool top and bottom.
3. Place a pipe collar around the service penetration (pipe) and ensure that the fixing lugs are positioned tightly to the surface of the floor so that the fixings can be inserted fully.
4. Where the surface is uneven, apply a sealing bead of Protecta® FR Acrylic between the floor and the pipe collar.
5. Attach the pipe collar through the timber and at least 40mm into the concrete - i.e. with Ø4 x 65mm long masonry screws or expansion bolts if the timber infill is 25mm thick.
6. Where the floor slab is less than 150mm the area around the penetration must be built up to 150mm using Protecta FR Board or plasterboard (min 100mm from edge of aperture hole).



System/FPA Register ID# FC473

**Products** Protecta FR Collar  
Protecta FR Acrylic

**Application** Fire stopping of plastic pipes in rigid floors with in-situ timber formwork

**Construction** Minimum floor thickness of 150mm and comprise aerated concrete or concrete with a minimum density of 650kg/m<sup>3</sup>

### Fire & Sound classification

Fire classifications will be the same as for the equivalent system without timber infill, subject to;  
 Max FRR -/120/120  
 Annular space to be sealed top and bottom with 25mm FR Acrylic plus 25mm stonewool.  
 Collar to be fixed through the timber formwork and at least 40mm into concrete slab.

Sound reduction (seal only)

STC 58

As a part of our policy of on-going product development and testing, we reserve the right to modify, alter or change product specifications without giving notice. All information contained in this document is given in good faith and is provided for guidance only. Any drawings provided are for illustrative purposes only. As Polyseam has no control over the methods or competence of installation and of prevailing site conditions, no warranties, expressed or implied, is intended to be given as to the actual performance of the product mentioned or referred to herein and no liability whatsoever will be accepted for any loss, damage or injury arising from the use of the information given.

For all technical details on the products specified please refer to the technical data sheets that can be found on [www.firestopcentre.co.nz](http://www.firestopcentre.co.nz)

Signed and approved:

Sheet size: **A4**  
 Drawn date & no: 28/7/17

Scale: **NTS**  
 Drawn by: K.B